

Company Profile 2009



Arden Windows Ltd

Manufacturers and installers of
bespoke timber windows and door sets

Arden Windows Ltd is a UK based manufacturer and installer of high quality bespoke timber windows and door sets.

Arden Windows utilises precision engineered timber with the latest advanced manufacturing techniques to deliver a competitive, high performance range of market leading windows and door sets.

From one-site to multi-site, from affordable homes to luxury developments, our products can be custom made to your specific requirements.

And by offering customers an all-in-one solution incorporating surveying, design, manufacture, delivery, installation and aftercare, we make it simpler to specify our products.

Arden Windows. Simply better.



The Benefits

Over the last 25 years, Arden Windows has developed a unique offer which includes:

- 5 systems of timber windows made to any size and configuration from standard section profiles
- Eco-friendly water based Boron preservative providing a 30 year guarantee on timber against rot and fungal attack (providing the product is maintained during its service life)
- Comprehensive 10 year guarantee on factory glazing
- Energy efficient rated windows to comply with Building Regulations Part L
- Internal beading option on casement windows
- Vented and drained systems with concealed glazing pins
- Flexible lead times with guaranteed delivery periods
- Supply and 'Supply & Fit' solutions.

Certifications

- ISO9001:2000 Quality Assurance Standard
- Wood Window Alliance Member, FENSA registered and Constructionline approved
- BS6375 certification for weatherproofing
- Secured by Design (tested to BS7950)
- Factory Glazing to BS8000 and GGF recommendations
- Up to 28mm double glazed units to BS5713
- PAS23-24 single and double door sets
- FSC approved softwood where specified.

Product Finder

- P4 The Warwick**
Over rebated casement
- P7 The Stoneleigh**
Mock sash casement
- P10 The Hathaway**
Flush casement
- P13 The Kinward**
Slide only and 'slide & tilt'
- P16 Stratford Doorsets**
PAS 23/24 certified

Please Enquire:

- Top swing casements
- Preformed cavity closers



By buying products with the FSC label you are supporting the growth of responsible forest management worldwide

TT-COC-002362

© 1996 Forest Stewardship Council A.C.



WOOD. AT THE HEART OF A GOOD WINDOW
The Wood Window Alliance



Certificate Number 013015



The Warwick Window Range

Improved features

The new "Warwick" Window is built on our "MK2" product with improved features, these include:



- Full BS7950 / BS6375 Accredited
- Double Weatherseal for higher performance
- Ability to incorporate up to 28mm double glazed units for better acoustic benefits
- U-values lower than 1.5W/M2k achievable (where specified)
- 70mm Section

Timber

All windows are supplied as standard with European Redwood frames and cills and laminated Redwood sashes. Idigbo hardwood for stain finish and Sapele hardwood for paint finish is available upon request.

Glazing

Glazed windows are supplied glazed externally or internally with two sheets of 4mm Glass in a double glazed unit with the inside of one pane coated with Planitherm to comply with Part L of the Building Regulations. Toughened glass and laminated glass options are available.

Square, rectangular and diamond leaded lights are also available. Obscure patterns available are Arena, Bark, Haze, Maple, Frost and Leaf.

Safety Glazing

Where windows are situated in high risk areas we supply safety glass as standard to comply with Building Regulations Approved Document NI (1991) See Figure 1.2 for details

Ironmongery



From left to right White, Black, Gold, Satin Chrome, Bright Chrome

Windows are all supplied with a minimum 2 point Espagnolette locking complete with white key locking handle (unless non locking is required). Black, gold, bright chrome and satin chrome are optional at additional cost.

Where there is a mobility or special needs requirement, low level handles and locking system can be fitted at an additional cost.

Secured by Design

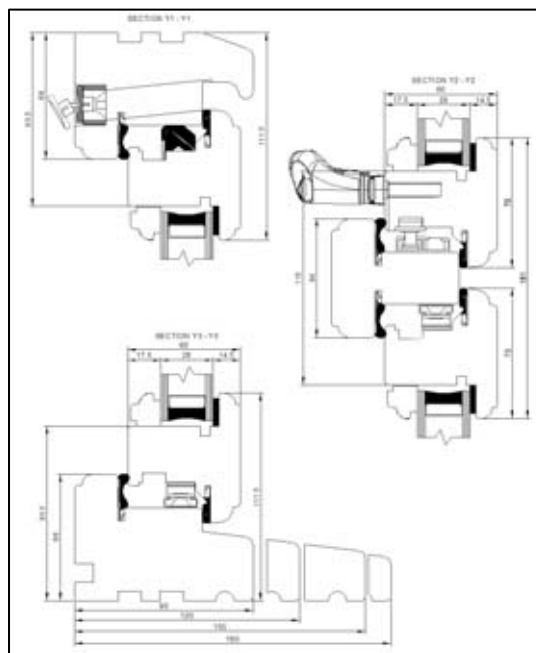
Full 'Secured by Design' compliance is available by utilising full shoot-bolt locking system complete with Vector Excluder sash guards.

Finish

Windows are to be supplied as standard with one base coat and one top coat to give a semi finish. Full final top coat factory finish is available as an option.

Special paint colours are available at an additional cost.

Figure 3.1 a typical section through the Warwick window



Trickle Ventilation

All Arden Windows Ltd windows are manufactured to comply with the Building Regulations regarding trickle ventilation. Any frame below 900mm wide can have a maximum 1nr Titon XS16 4600EA. Any frame 900mm and above can have either 1nr or 2nr 4600EA.



In areas of mobility cord control vents are available.

Preservative Treatment

All Softwood windows are supplied with factory applied water based Boron preservative treatment.

This provides a 30 year guarantee against rot and fungal attack assuming maintenance and care advice is followed. Since it is also water based it is more environmentally friendly than traditional treatments.

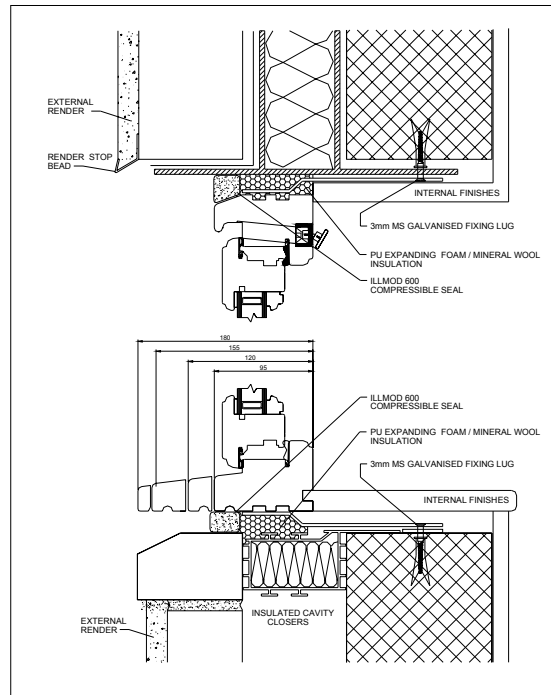
Additional Ironmongery

Optional Integral restrictors built into hinge. Lockable face fixed restrictors are also available at an additional cost.

Egress escape Facility available where opening size meets minimum required opening of 450mm x 750mm and a minimum 0.33m² overall size*

** please note that where escape facility is required and restrictors are used, Maco Autolatch restrictors are to be supplied and fitted*

Figure 3.2 Showing Cill variations and extensions



Cills

Windows are supplied with 155mm cills as standard providing an 87mm projection

68mm Flush cills (no projection) and 95mm (27mm projection) and 120mm (52mm projection) stub cills available where stone sub cills are used.

Extended 180mm (112mm projection) and 200mm (132mm projection) cills available for where windows are sat in tile hanging or where windows are sat back behind the brickwork.



Tolerance

We will manufacture our windows and door sets to the exact specified order size. Please ensure that any fitting tolerance required is deducted.

Weather Strip

All windows are supplied as standard with white draught-proofing to painted colours and brown draught-proofing to stained windows unless a specific colour (white or brown) is requested by the customer.

Handing

All windows shown on these illustrations are viewed externally, In instances where windows are not symmetrical, windows can be supplied with the opposite handing.

Bay Windows

Splay or Square bays can be supplied and factory assembled with mitred cills.

Square bays are supplied with 68mm x 68mm corner posts as standard

Splay Bays are supplied as standard at 45 degrees. Other angles are available upon request. Please refer to Appendix B for further information.

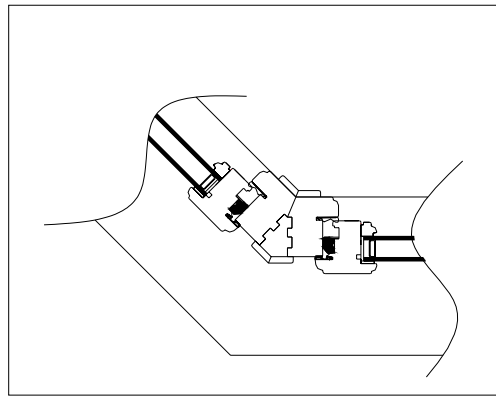


Figure 3.3 typical Bay detail for corner joint.

Manufacturing Standards

All Transom drops for fan lights will be manufactured to a set drop of 355mm.

All mullions will be positioned centrally.



The Stoneleigh Window Range

General

The Stoneleigh is available in both external and internally beaded options. This offers a higher performance casement window which replicates a traditional vertical sliding sash (mock sash) appearance.



Timber

All windows are supplied as standard with European Redwood frames and cills and laminated redwood sashes. Idigbo hardwood for stain finish and Sapele hardwood for paint finish is available upon request.

Glazing

Glazed windows are supplied glazed externally or internally with two sheets of 4mm Glass in a double glazed unit with the inside of the outer pane coated with Planitherm to comply with Part L of the building regulations.

Toughened glass and laminated glass options are available.

Square, rectangular and diamond leaded lights are also available.

Obscure patterns available are Arena, Bark, Haze, Maple, Frost and Leaf.

Safety

Where windows are situated in high risk areas we supply safety glass as standard to comply with Building Regulations Approved Document NI (1991) See Figure 1.2 for details.

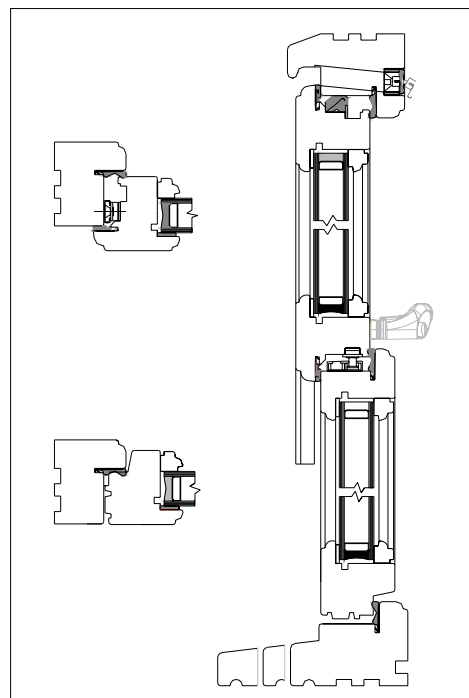
Ironmongery

Windows are all supplied with a minimum 2 point Espagnolette locking complete with White key locking handle (unless non locking is required). Black, gold, bright chrome and satin chrome are optional at additional cost.



From left to right White, Black, Gold, Satin Chrome, Bright Chrome

Figure 5.1 Typical section through Mock sash Window



Secured By Design

Full Secured by Design compliance is available by utilising full shoot-bolt locking system complete with Vector Excluder Sash guards.

Finish

Windows are to be supplied as standard with one base coat and one top coat to give a semi finish. Full final top coat factory finish is available as an option.

Special paint colours are available at an additional cost.

Preservative Treatment

All softwood windows are supplied with factory applied water based Boron preservative treatment.

This provides 30 years against rot and fungal attack and since it is also water based it is more environmentally friendly than traditional treatments.

Trickle Ventilation

All Arden Windows Ltd windows are manufactured to comply with the Building Regulations regarding trickle ventilation. Any frame below 900mm wide can have a maximum 1nr Tition XS16 4600EA. Any frame 900mm and above can have either 1nr or 2nr 4600EA.

In areas of mobility cord control vents are available.

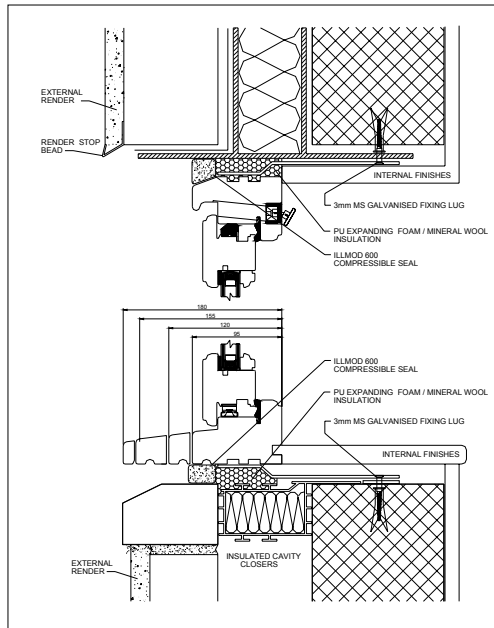


Additional Ironmongery

Optional Integral restrictors built into hinge. Lockable face fixed restrictors also available upon request also available at an additional cost.



Figure 5.2 Showing Cill variations and extensions



Cills

Windows are supplied with 155mm cills as standard providing an 87mm projection.

68mm Flush cills (no projection) and 95mm (27mm projection) and 120mm (52mm projection) stub cills available where stone sub cills are used.

Extended 180mm (112mm projection) and 200mm (132mm Projection) cills available for where windows are sat in Tile hanging or where windows are sat back behind the brickwork

Tolerance

We will manufacture our windows and door sets to the exact specified order size. Please ensure that any fitting tolerance required is deducted.

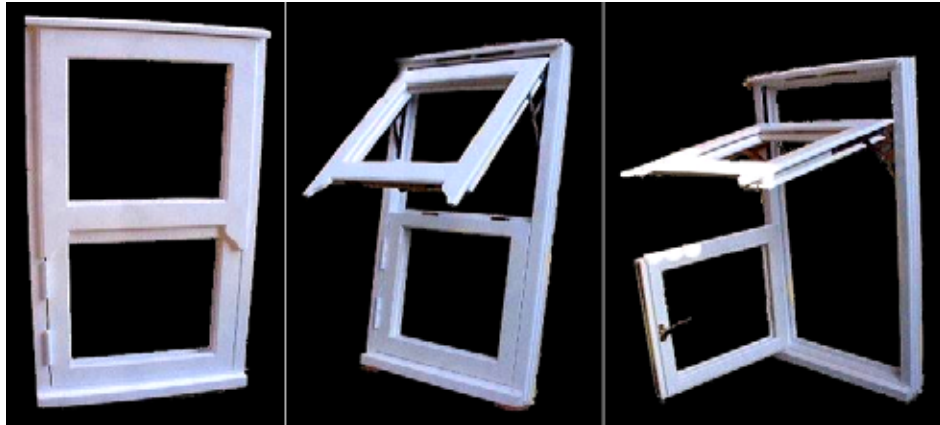
Weatherstrip

All windows are supplied as standard with White draught proofing to painted colours and brown draught proofing to stained windows unless a specific colour (white or brown) is requested by the customer.



Escape Facility

Escape facility is available as an option as per the diagram below.



Bay Windows

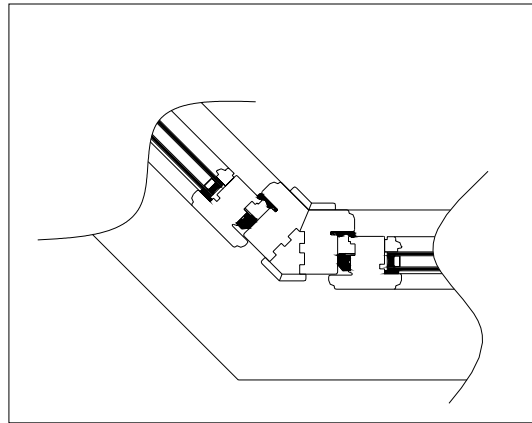
Splay or square bays can be supplied and factory assembled with mitred cills. Square bays are supplied with 68mm x 68mm corner posts as standard.

Splay bays are supplied as standard at 45 degrees. Other angles are available upon request. Please refer to Appendix B for further information.

Manufacturing Standards

All mullions will be positioned centrally.

Figure 3.3 typical Bay detail showing corner joint detail



The Hathaway Window Range

General

The Hathaway range is a flush casement window system that offers the visual appearance of a more traditional window whilst maintaining the highest performance and security of a modern system.



Timber

All windows are supplied as Standard with European Redwood frames and cills and laminated redwood Sashes. Idigbo hardwood for stain finish and Sapele hardwood for paint finish is available upon request.

Glazing

Glazed windows are supplied glazed internally with two sheets of 4mm Glass in a double glazed unit with the inside of the outer pane coated with Planitherm to comply with Part L of the Building Regulations.

Toughened glass and laminated glass options are available

Square, rectangular and diamond leaded lights are also available.

Obscure patterns available are Arena, Bark, Haze, Maple, Frost and Leaf.

Safety Glazing

Where windows are situated in high risk areas we supply safety glass as standard to comply with Building Regulations Approved Document NI (1991) See Figure 1.2 for details.

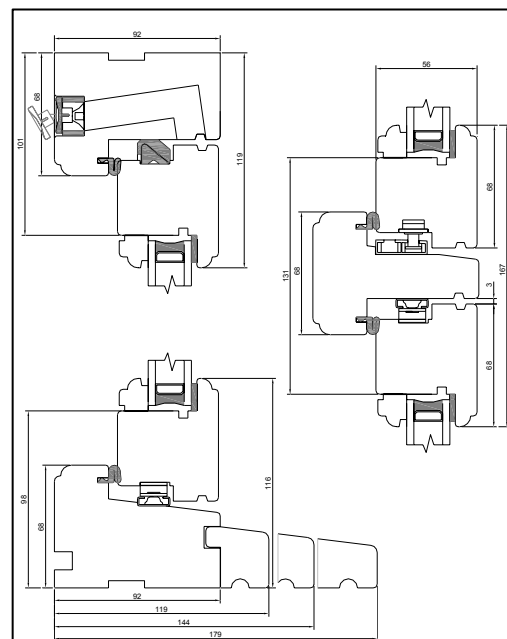
Ironmongery

Windows are all supplied with a minimum 2 point Espagnolette locking complete with white key locking handle (unless non locking is required). Black, gold, bright chrome and satin chrome are optional at additional cost.



From left to right White, Black, Gold, Satin Chrome, Bright Chrome

Figure 4.1 a typical section through a Hathaway Window



Secured By Design

'Secured by Design' compliance is available by utilising full shoot bolt locking system complete with Vector Excluder sash guards.

Where there is a mobility or special needs requirement, low level handles and locking system can be fitted at an additional cost

Finish

Windows are to be supplied as standard with one base coat and one top coat to give a semi finish. Full final top coat factory finish is available as an option.

Trickle Ventilation

All Arden Windows Ltd windows are manufactured to comply with the Building Regulations regarding trickle ventilation. Any frame below 900mm wide can have a maximum 1nr Titon XS16 4600EA. Any frame 900mm and above can have either 1nr or 2nr 4600EA.



In areas of mobility cord control vents are available.

Preservative Treatment

All Softwood windows are supplied with factory applied water based Boron preservative treatment.

This provides a 30 year guarantee against rot and fungal attack assuming maintenance and care advice is followed. Since it is also water based it is more environmentally friendly than traditional treatments.

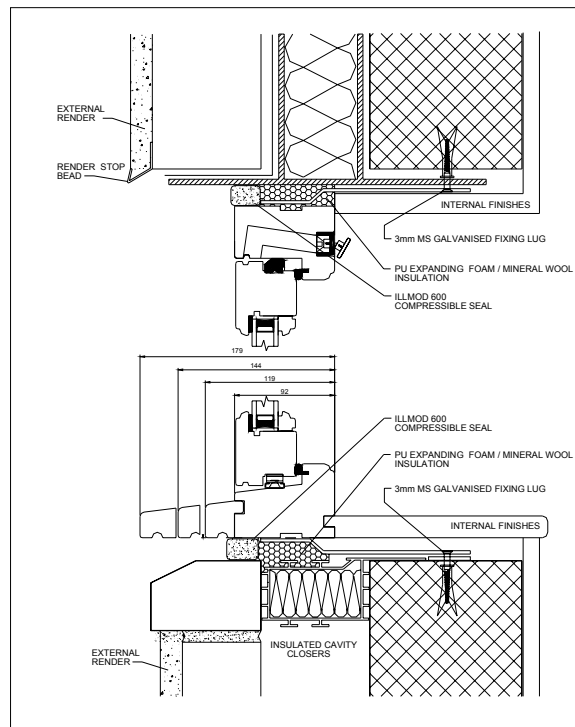
Additional Ironmongery

Optional Integral restrictors built into hinge. Lockable face fixed restrictors are also available at an additional cost.

Egress escape Facility available where opening size meets minimum required opening of 450mm x 750mm and a minimum 0.33m square metre overall size*

** please note that where escape facility is required and restrictors are used, Maco Autolatch restrictors are to be supplied and fitted*

Figure 4.2 Showing Cill variations and extensions



Cills

Windows are supplied with 179mm cills (87mm projection) as standard.

92mm Flush (no projection), 119mm stub (27mm projection) and 144mm (52mm projection) cills available where stone sub cills are used.

Extended 204mm cills (112mm projection) available for where windows are sat in Tile hanging or where windows are sat back behind the brickwork.



Tolerance

We will manufacture our windows and door sets to the exact specified order size. Please ensure that any fitting tolerance required is deducted.

Weatherstrip

All windows are supplied as standard with White draught proofing to painted colours and brown draught proofing to stained windows unless a specific colour (white or brown) is requested by the customer.

Handing

All windows shown on these illustrations are viewed externally. In instances where windows are not symmetrical, windows can be supplied with the opposite handing.

Bay Windows

Splay or Square bays can be supplied and factory assembled with mitred cills.

Square bays are supplied with 92mm x 92mm corner posts as standard.

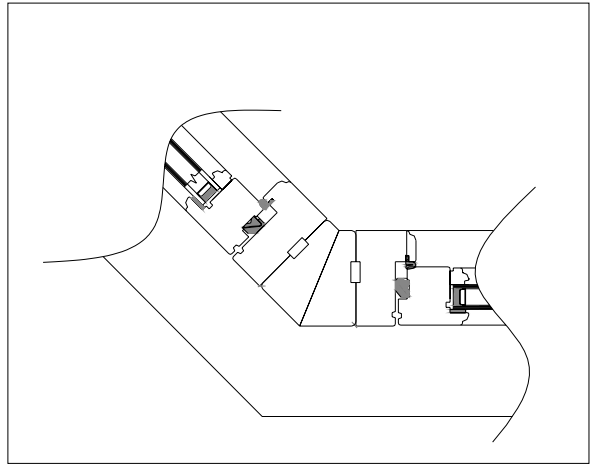
Splay Bays are supplied as standard at 45 degrees. Other angles are available upon request. Please refer to appendix B for further information.

Manufacturing Standards

All Transom drops for fan lights will be manufactured to a set drop of 355mm.

All mullions will be positioned centrally.

Figure 4.3 typical Bay detail showing corner detail



The Kinward Window Range

General

The Kinward Range is a high performance vertical sliding sash window. The Kinward offers both performance and authentic aesthetics.



Timber

All windows are supplied as Standard with European Redwood frames and Laminated redwood Sashes. Idigbo for Stained and Sapele for painted Hardwoods are available upon request. All Cills are to be Hardwood as standard.

Glazing

Glazed windows are supplied glazed internally with two sheets of 4mm Glass in a double glazed unit with the inside of the outer pane coated with Planitherm to comply with Part L of the building regulations.

Toughened glass and Laminated glass options are available

Square, Rectangular and Diamond leaded lights are also available.

Obscure patterns available are Arena, Bark, Haze, Maple, Frost and Leaf.

Safety

Where windows are situated in high risk areas we supply safety glass as standard to comply with Building Regulations Approved Document NI (1991) See Figure 1.2 for details.

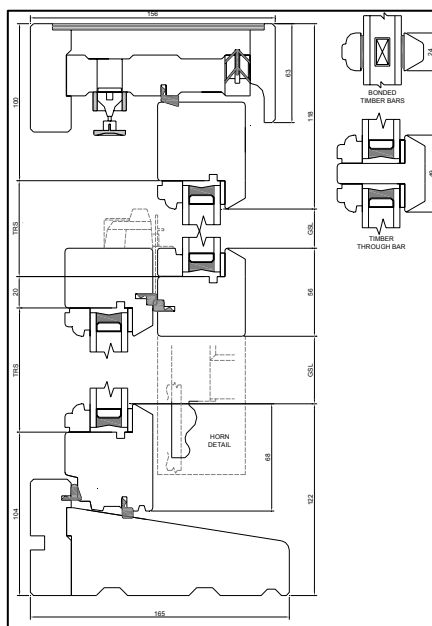
Ironmongery

Windows are all supplied with pre-tensioned spiral balances. White Fitch catch locks and white sash pulls are supplied by default. Bright chrome, satin chrome and gold are all optional colours at an additional cost.

From left to right bright chrome, gold, satin chrome, gold with locking cylinder, white with locking cylinder



Figure 6.1 Typical section through a Kinward



Additional Ironmongery

Heavy duty sash stops are removable stops to restrict the opening of the top and bottom sash. These are available in either gold or silver at additional cost.

Finish

Windows are to be supplied as standard with one base coat and one top coat to give a semi finish. Full final top coat factory finish is available as an option.

Special Paint colours are available at an additional cost

Preservative Treatment

All Softwood windows are supplied with factory applied water based Boron preservative treatment.

This provides a 30 year guarantee against rot and fungal attack assuming maintenance and care advice is followed. Since it is also water based it is more environmentally friendly than traditional treatments.

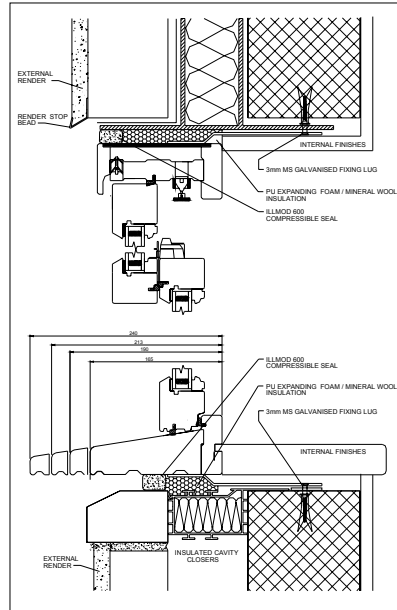
Trickle Ventilation

All Arden Windows Ltd windows are manufactured to comply with the building regulations regarding trickle ventilation. Any frame below 900mm wide can have a maximum 1nr Titon XS16 4600EA. Any frame 900mm and above can have either 1nr or 2nr 4600EA.

In areas of mobility cord control vents are available.



Figure 6.2 Typical Cill Extension detail



Cills

Windows are supplied with 165mm flush cills as standard. Extended 190mm (25mm projection), 214mm (49mm projection) and 240mm 979mm Projection) cills are available where windows are sat in Tile hanging or where windows are sat back behind the brickwork.

Escape Windows

Escape opening can be achieved on all windows over 580mm wide and 1350mm high (based on equal height split)

Based on a single light window, narrow modular double sliders may not achieve this.



Tolerance

We will manufacture our windows and door sets to the exact specified order size. Please ensure that any fitting tolerance required is deducted.

Weather strip

All windows are supplied as standard with white draught proofing to painted colours and brown draught proofing to stained windows unless a specific colour (white or brown) is requested by the customer.



Bay Windows

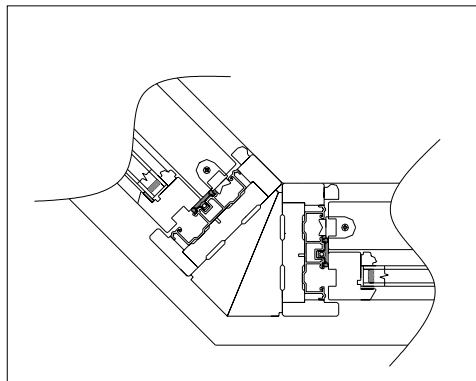
Splay or Square bays can be supplied and factory assembled with mitred cills.

Square bays are supplied with 156mm x 156mm corner posts as standard

Splay Bays are supplied as standard at 45 degrees. Other angles are available upon request.

See appendix B for more information.

Fig 6.3 Typical Bay Detail showing corner detail.



Building Standards

Unless specified all sliders are to be manufactured without extended liners to the head and jamb.

This is an additional option for situations where windows sit behind the brickwork within a reveal.



Stratford Door Sets Range

General

The Stratford flush door set range is available as a standard set or with 'Secured by Design' system.



Timber

All doorsets are supplied as standard with European Redwood frames and cills and laminated redwood doors. Idigbo for stained and Sapele for painted hardwoods are available upon request. European Oak is also available upon request.

Glazing

Glazed door sets are supplied glazed internally with two sheets of 4mm toughened glass in a double glazed unit with the inside of the outer pane coated with toughened Planitherm to comply with Part L of the Building Regulations.

Laminated glass options are available.

Square, rectangular and diamond leaded lights are also available.

Obscure patterns available are Arena, Bark, Haze, Maple, Frost and Leaf

Safety

Where windows are situated in high risk areas we supply safety glass as standard to comply with Building Regulations Approved Document NI (1991) See Figure 1.2 for details.

Ironmongery

Door sets are supplied with a full multi-point Espagnolette locking system complete with white key locking handle and matching coloured hinges. Gold, bright chrome and satin chrome are optional at additional cost.

Entrance door sets to have aluminium thresholds only.



Secured By Design

Full 'Secured by Design' Door locking system is available upon request

Finish

Door sets are to be supplied as standard with one base coat and one top coat to give a Semi finish. Full final top coat factory finish is available as an option.

Special paint colours are available at an additional cost.

Additional Ironmongery

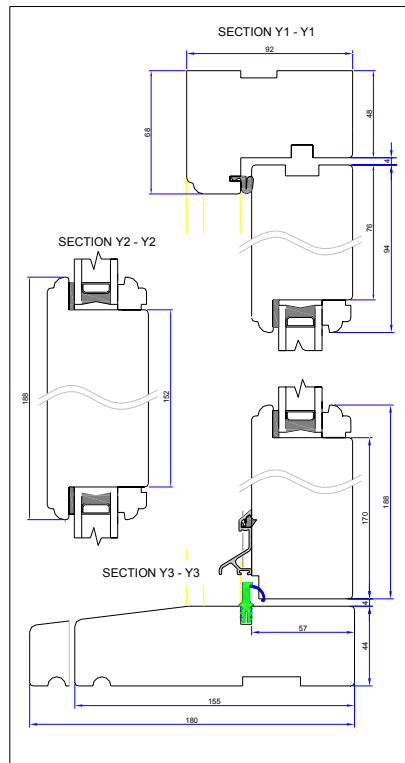
Open out door sets include opening restrictors.

Preservative Treatment

All softwood doors are supplied with factory applied water based Boron preservative treatment.

This provides 30 years against rot and fungal attack and since it is also water based it is more environmentally friendly than traditional treatments.

Fig 7.1 Section detail of our Stratford Doorset



Cills

Windows are supplied with 155mm cills (63mm projection) as standard.

92mm Flush, 119mm (27mm projection) stub and 144mm (52mm projection) cills available where stone sub cills are used.

Tolerance

We will manufacture our windows and door sets to the exact specified order size. Please ensure that any fitting tolerance required is deducted.

Weather strip

All doors are supplied as standard with white draught proofing to painted colours and brown draught proofing to stained windows unless a specific colour (white or brown) is requested by the customer.

Manufacturing Standards

All Transom drops for fan lights will be manufactured to a set drop of 355mm

Handing

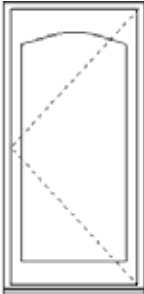
All door sets shown on these illustrations are viewed externally. In instances where windows are not symmetrical, door sets can be supplied opposite handing.



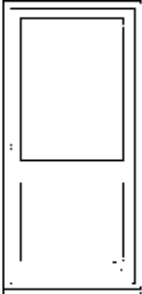
Example Door Styles



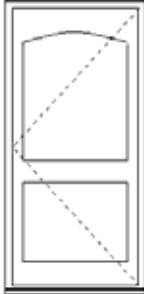
Kenilworth



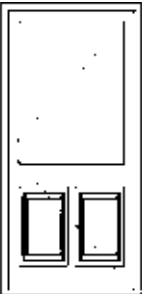
Maxstoke



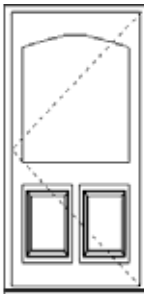
Atherston



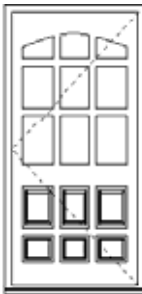
Hartshill



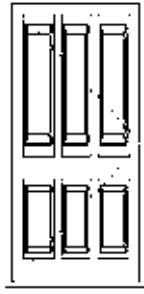
Thornton



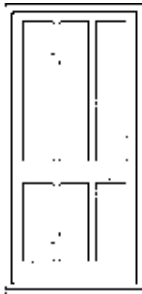
Wellesbourne



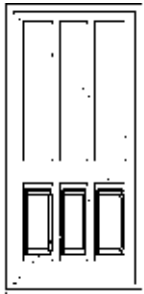
Meriden



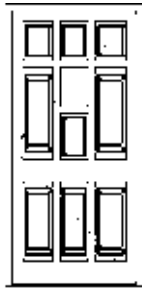
Brinklow



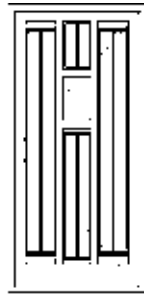
Huncote



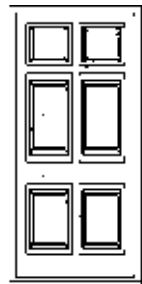
Bramcote



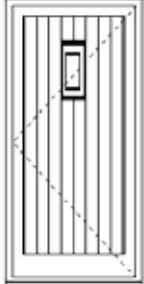
Ascote



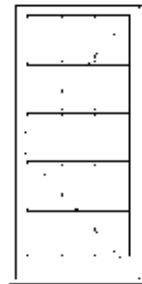
Wescote



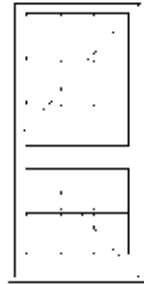
Milcote



Charlecote



Kenilworth Bar



Atherstone Bar



Key Personnel

The Sales Team

Peter Shore

National Sales Manager - Mobile no. 07970 022175

Martin Miles

Area Sales Manager (South East) - Mobile no. 07740 610660

Martin McKean

Area Sales Manager (Midlands and North) - Mobile no. 07980 877254

Office Contacts

Jim Hawthorne

- Contracts Manager

Nick Platt

- Installations Manager

Scott Bolton

- Estimating and Processing Manager

David Wilson

- Production Scheduler and Deliveries

John Rolfe

- Remedial Co-ordinator

Barry Morris

- Marketing & Communications Manager

Simon Badham

- Managing Director

Paul Lee

- Operations Manager

David Bickley

- Financial Director

If you are interested in obtaining further details on our product and services, please do not hesitate to contact us.

Tel: 02476 632423

Fax: 02476 237317

Email: info@ardenwindows.net

Web: www.ardenwindows.net



Arden Windows Ltd

Tel: 02476 632423

Fax: 02476 237317

Email: info@ardenwindows.net

Web: www.ardenwindows.net